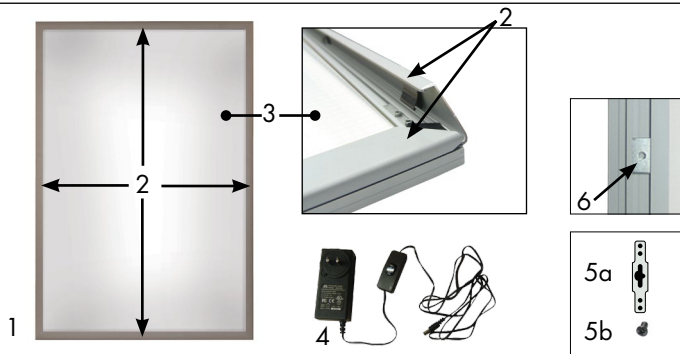


LED Light Box

Product Parts

- 1 - Frame
- 2 - Snap Edge
- 3 - Protective Graphic Film
- 4 - Power Cord
- 5 - Wall Mount Hardware
 - 5a - Hanger (x2)
 - 5b - Bolt (x2)
- 6 - Threaded Glider (x8)



Display Set-Up

Step 1

Remove parts from packaging and place on a clean surface. Open Snap Edges (2) on all four sides.



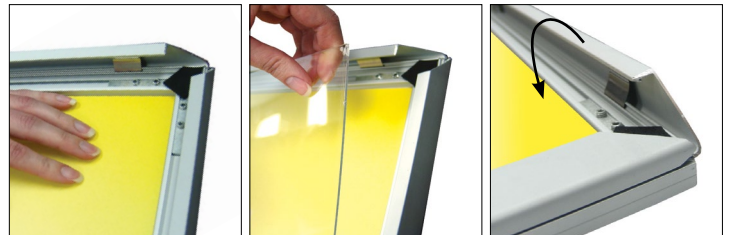
Step 3

Connect Power Cord (4) to the cord located on the back of your Frame (1). Plug into outlet. Use the switch on the Power Cord (4) to turn your display on and off.



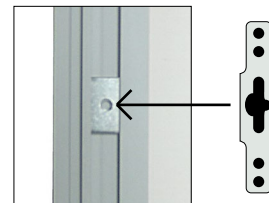
Step 2

Lay the Graphic evenly inside the Frame (1). Place the Protective Graphic Film (4) on top of the Graphic. Close all 4 Snap Edges (2).



Step 4

To attach Wall Mounting Hardware (5) select the Threaded Glider(s) on the back of your Frame (1). Set the Hanger (5a) on top of the Glider (6) aligning the threaded holes. Place a Bolt (5b) and thread it through the Hanger (5a) and the Glider (6). Slide the Glider were desired and tighten with a screw driver.



Storage

Store in a cool dry location.

Care

To clean, wipe with damp cloth.

Warranty Information: All products are designed to provide the user with a cost-effective and durable product. Standard warranty is a 'one year parts and labor' warranty which warrants product against defects in material and workmanship. It does not cover damage due to accidents, abuse, or normal wear and tear. Products found to be defective will be replaced or repaired at factory's discretion.